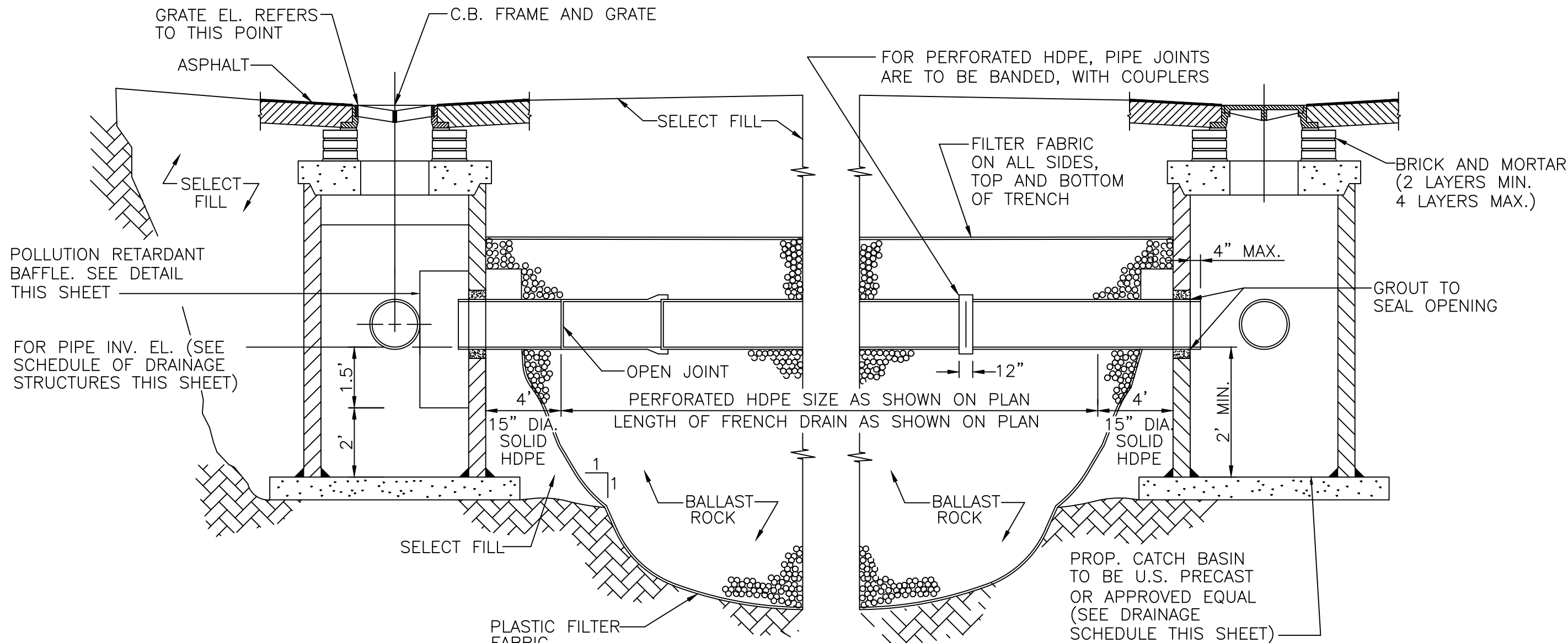


DRAINAGE STRUCTURE SCHEDULE					
No.	TYPE & INSIDE DIMENSION	STRUCTURE BOTTOM ELEVATION	PRB	REMARKS	
CB-1	TYPE F 48"Ø	4.50	E.	US PRECAST STRUCTURE 3-18.3, US FOUNDRY GRATE 5130-6168	
CB-2	TYPE D 48"Ø	4.50	W.	US PRECAST STRUCTURE 3-18.3, US FOUNDRY GRATE 5130-6168	
CB-3	TYPE D 48"Ø	4.90	E.	US PRECAST STRUCTURE 3-18.3, US FOUNDRY GRATE 5130-6168	
CB-4	TYPE D 48"Ø	4.50	E.W.	US PRECAST STRUCTURE 3-18.3, US FOUNDRY GRATE 5130-6168	
CB-5	TYPE D 60"Ø	4.50	S.E.W.	US PRECAST STRUCTURE 3-18.3, US FOUNDRY GRATE 4105-6220	
CB-6	TYPE D 48"Ø	4.50	E.W.	US PRECAST STRUCTURE 3-18.3, US FOUNDRY GRATE 5130-6168	
CB-7	TYPE D 48"Ø	4.50	E.W.	US PRECAST STRUCTURE 3-18.3, US FOUNDRY GRATE 5130-6168	
CB-8	TYPE D 60"Ø	4.50	S.W.	US PRECAST STRUCTURE 3-18.3, US FOUNDRY GRATE 4105-6220	
CB-9	TYPE D 48"Ø	3.00		US PRECAST STRUCTURE 3-18.3, US FOUNDRY GRATE 5130-6168	
CB-10	TYPE D 48"Ø	3.00		US PRECAST STRUCTURE 3-18.3, US FOUNDRY GRATE 4105-6220	
CB-11	TYPE D 48"Ø	3.00		US PRECAST STRUCTURE 3-18.3, US FOUNDRY GRATE 4105-6220	
CB-12	TYPE D 48"Ø	3.00		US PRECAST STRUCTURE 3-18.3, US FOUNDRY GRATE 4105-6220	
CB-13	TYPE D 60"Ø	3.00		US PRECAST STRUCTURE 3-18.3, US FOUNDRY GRATE 4105-6220	
CB-14	TYPE D 48"Ø	3.00		US PRECAST STRUCTURE 3-18.3, US FOUNDRY GRATE 4105-6220	
CB-15	TYPE D 60"Ø	3.00		US PRECAST STRUCTURE 3-18.3, US FOUNDRY GRATE 4105-6220	
CB-16	TYPE D 48"Ø	3.00		US PRECAST STRUCTURE 3-18.3, US FOUNDRY GRATE 4105-6220	
CB-17	TYPE D 48"Ø	3.00		US PRECAST STRUCTURE 3-18.3, US FOUNDRY GRATE 4105-6220	
CB-18	TYPE D 60"Ø	3.00		US PRECAST STRUCTURE 3-18.3, US FOUNDRY GRATE 4105-6220	
CB-19	TYPE D 4' x 6'	0.00	W.	US PRECAST STRUCTURE 3-18.3, US FOUNDRY GRATE 5130-6168	
CB-20	TYPE D 48"Ø	4.50	E.W.	US PRECAST STRUCTURE 3-18.3, US FOUNDRY GRATE 5130-6168	
CB-21	TYPE D 48"Ø	4.50	E.W.	US PRECAST STRUCTURE 3-18.3, US FOUNDRY GRATE 5130-6168	
CB-22	TYPE D 48"Ø	4.50	E.W.	US PRECAST STRUCTURE 3-18.3, US FOUNDRY GRATE 5130-6168	
CB-23	TYPE D 48"Ø	4.50	E.W.	US PRECAST STRUCTURE 3-18.3, US FOUNDRY GRATE 5130-6168	
CB-24	TYPE D 48"Ø	4.50	E.W.	US PRECAST STRUCTURE 3-18.3, US FOUNDRY GRATE 5130-6168	
CB-25	TYPE D 48"Ø	4.50	E.W.	US PRECAST STRUCTURE 3-18.3, US FOUNDRY GRATE 5130-6168	
CB-26	TYPE D 48"Ø	3.00	E.	US PRECAST STRUCTURE 3-18.3, US FOUNDRY GRATE 5130-6168	
CB-27	TYPE D 48"Ø	4.50	S.	US PRECAST STRUCTURE 3-18.3, US FOUNDRY GRATE 4105-6220	
CB-28	TYPE D 48"Ø	1.50	E.	US PRECAST STRUCTURE 3-18.3, US FOUNDRY GRATE 4105-6220	
CB-29	TYPE D 48"Ø	3.00	N.	US PRECAST STRUCTURE 3-18.3, US FOUNDRY GRATE 4105-6220	
CB-30	TYPE D 48"Ø	1.50	W.	US PRECAST STRUCTURE 3-18.3, US FOUNDRY GRATE 4105-6220	
MH-1	TYPE D 48"Ø	4.50	E.W.	US PRECAST STRUCTURE 3-18, US FOUNDRY GRATE 580	
MH-2	TYPE D 48"Ø	5.50		US PRECAST STRUCTURE 3-18, US FOUNDRY GRATE 580	
MH-3	TYPE D 60"Ø	3.00		US PRECAST STRUCTURE 3-18, US FOUNDRY GRATE 580	
MH-4	TYPE D 60"Ø	4.50	N.	US PRECAST STRUCTURE 3-18, US FOUNDRY GRATE 580	
MH-5	TYPE D 60"Ø	3.00	N.	US PRECAST STRUCTURE 3-18, US FOUNDRY GRATE 580	
OCS-01	TYPE D 60"Ø	0.00		REFER TO OCS-01 DETAIL ON THIS SHEET	

PRB = POLLUTANT RETARDANT BAFFLE



LONGITUDINAL SECTION

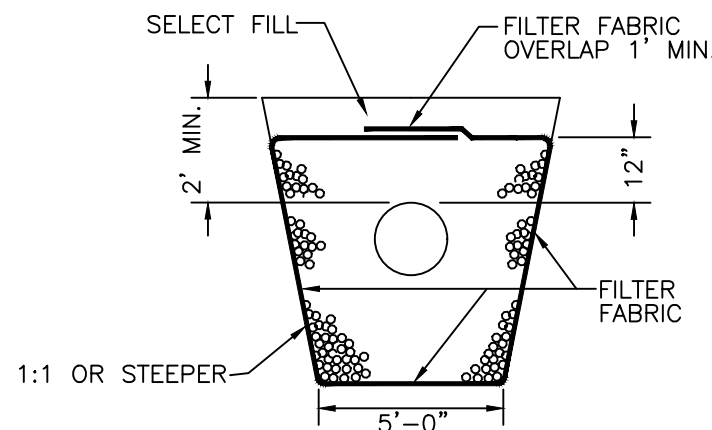
NOTE

AFTER THE BALLAST ROCK HAS BEEN PLACED TO THE PROPER ELEVATION IT SHALL BE CAREFULLY WASHED DOWN WITH CLEAN WATER TO ALLOW FOR INITIAL SETTLEMENT THAT MAY OCCUR. IF SETTLEMENT DOES TAKE PLACE, ADDITIONAL BALLAST ROCK WILL BE ADDED TO RESTORE THE PROPER ELEVATION SO THAT THE EXFILTRATION TRENCH IS COMPLETED IN ACCORDANCE WITH THE DETAILS.

NOTES:

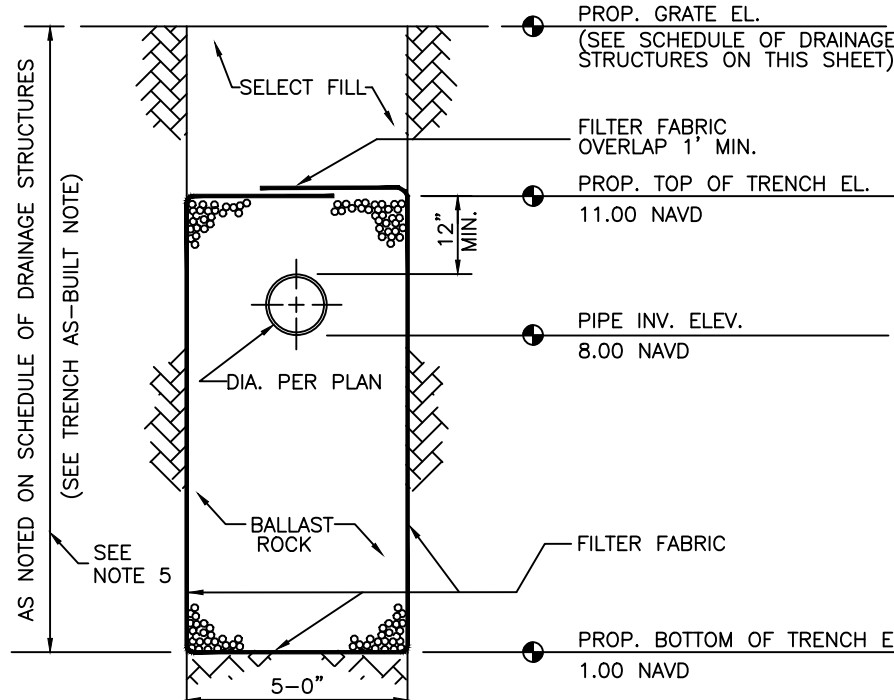
- INSTALL POLLUTION RETARDANT BAFFLE AS PER DETAIL THIS SHEET.
- THE PROPOSED TRENCH SHALL BE EXCAVATED TO THE BOTTOM OF TRENCH ELEVATION INDICATED IN THE DRAINAGE STRUCTURE SCHEDULE, UNLESS APPROVED OTHERWISE BY THE ENGINEER OF RECORD.
- THE CONTRACTOR SHALL PROVIDE AS-BUILT BOTTOM OF TRENCH ELEVATIONS AND LENGTH OF THE EXFILTRATION TRENCHES INSTALLED TO THE ENGINEER OF RECORD. AS-BUILTS SHALL BE CERTIFIED BY A LAND SURVEYOR REGISTERED IN THE STATE OF FLORIDA.
- STRUCTURAL DESIGN (WALL AND SLAB THICKNESS AND ALL REINFORCING) NOT REVIEWED. TO BE DESIGNED BY PRECASTER AND SHALL MEET FDOT STANDARDS AND SUPPORT HS-20 LOADING.
- THE BOTTOM OF THE EXFILTRATION TRENCH SHALL BE 10 FEET DEEP OR EXTEND TO A DEPTH WHERE EXISTING CLEAN FILL IS ENCOUNTERED, WHICHEVER IS GREATER.

EXFILTRATION TRENCH DETAIL

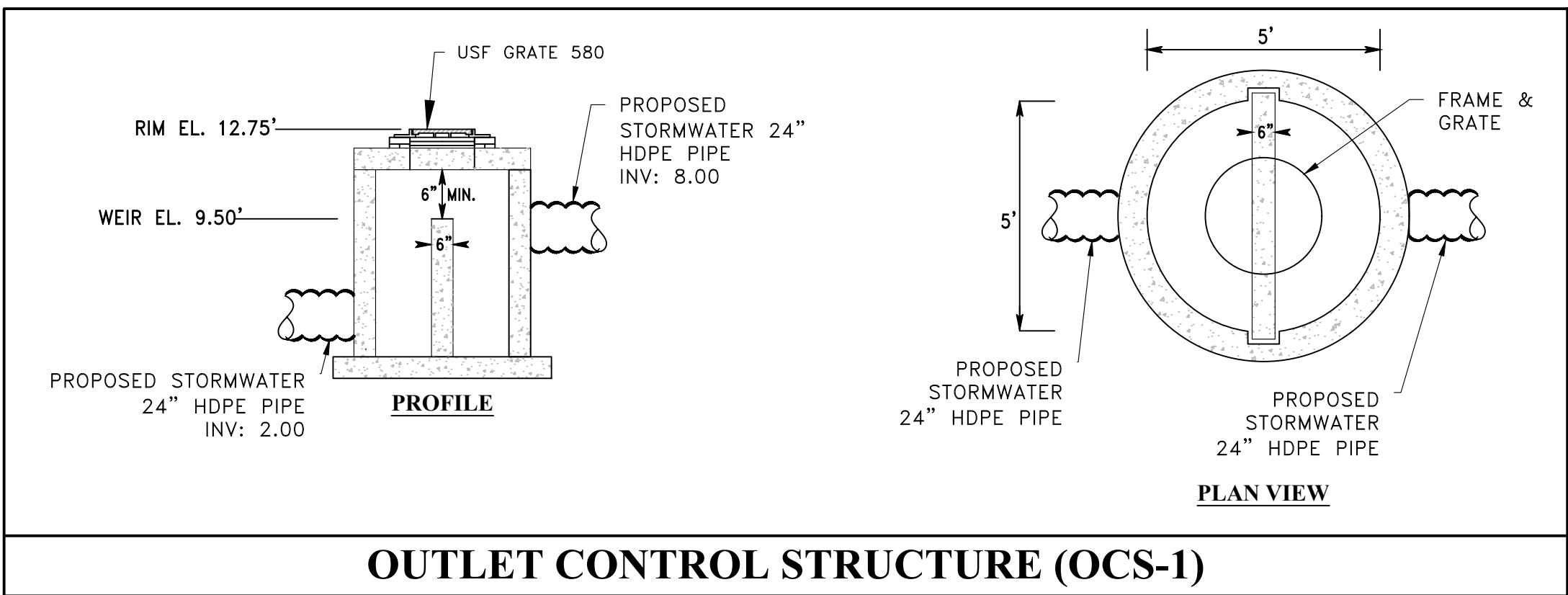


ALT. TRANS. SECTION*

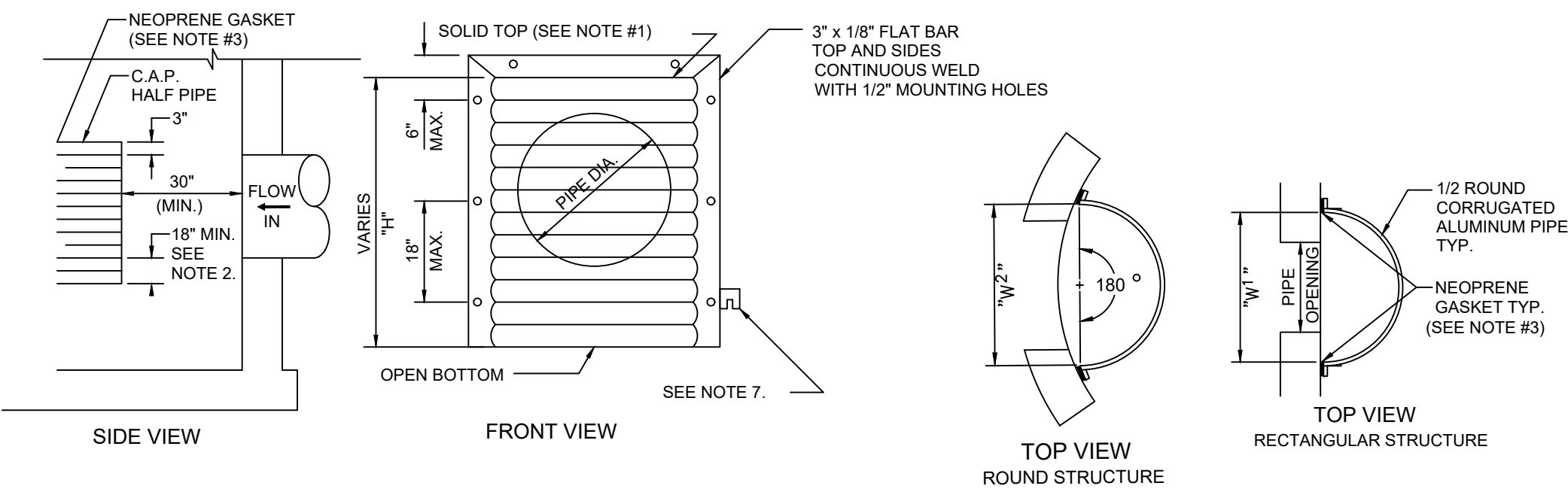
*MAY BE USED IN AREAS WHERE TRENCH WALLS WILL NOT STAND VERTICAL, OR WHERE CAVE-IN BELOW THE WATER TABLE IS LIKELY TO OCCUR. TO BE USED AT THE ENGINEER'S DISCRETION.



TRANSVERSE SECTION



OUTLET CONTROL STRUCTURE (OCS-1)



NOTES:

ALUMINUM SHEET OF SAME THICKNESS (GAUGE) AS PIPE SHALL BE WELDED TO CLOSE OPENING AT THE TOP.

THE BOTTOM ELEVATION OF THE POLLUTION RETARDANT BAFFLE MUST BE AT LEAST 18" BELOW CONTROL ELEVATION.

NEOPRENE ADHESIVE BACKED GASKET, OR APPROVED EQUAL (1" x 2") SHALL BE INSTALLED ON THE SIDES AND TOP OF ALL BAFFLES.

POLLUTION RETARDANT BAFFLE TO BE FASTENED IN PLACE WITH 3/8"x4" STAINLESS STEEL "RED HEADS", OR APPROVED EQUAL.

ALL EXFILTRATION TRENCHES SHALL HAVE A POLLUTION RETARDANT BAFFLE AT EACH CONNECTION POINT TO A STRUCTURE (SEE EXFILTRATION TRENCH DETAIL).

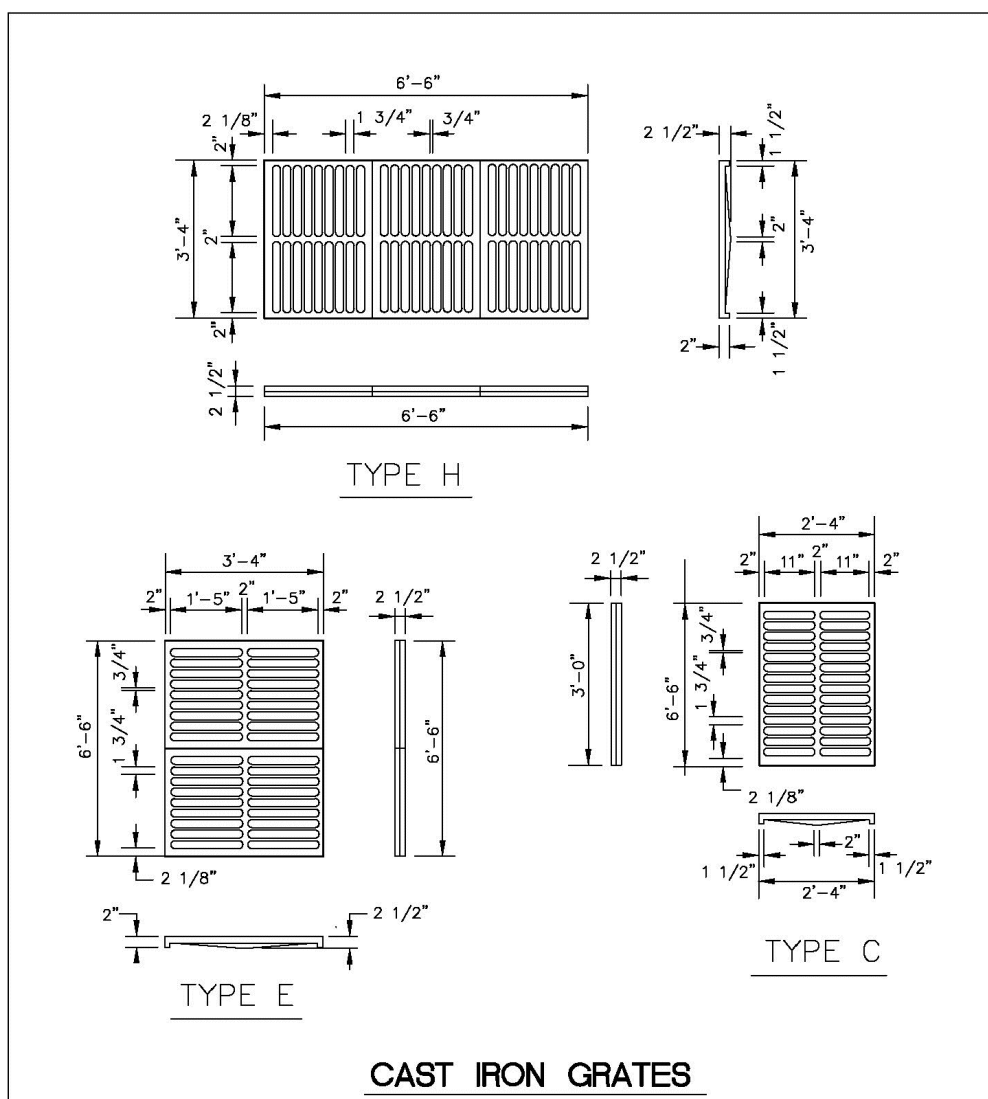
FIBERGLASS BAFFLES ARE NOT PERMITTED.

MOUNTING BRACKETS MAY BE ADDED TO FLAT BARS TO EASE INSTALLATION IN ROUND STRUCTURES. SPACING TO MATCH HOLES IN FLAT BARS.

PIPE DIA.	W ¹ (IN)	W ² (IN)	T (GAUGE)	(IN)
15"	21"	21"	16	VARIES
18"	24"	24"	16	VARIES
21"	30"	30"	16	VARIES
24"	30"	36"	16	VARIES
30"	36"	42"	14	VARIES
36"	42"	48"	14	VARIES
42"	48"	54"	14	VARIES
48"	54"	60"	14	VARIES
54"	60"	66"	14	VARIES

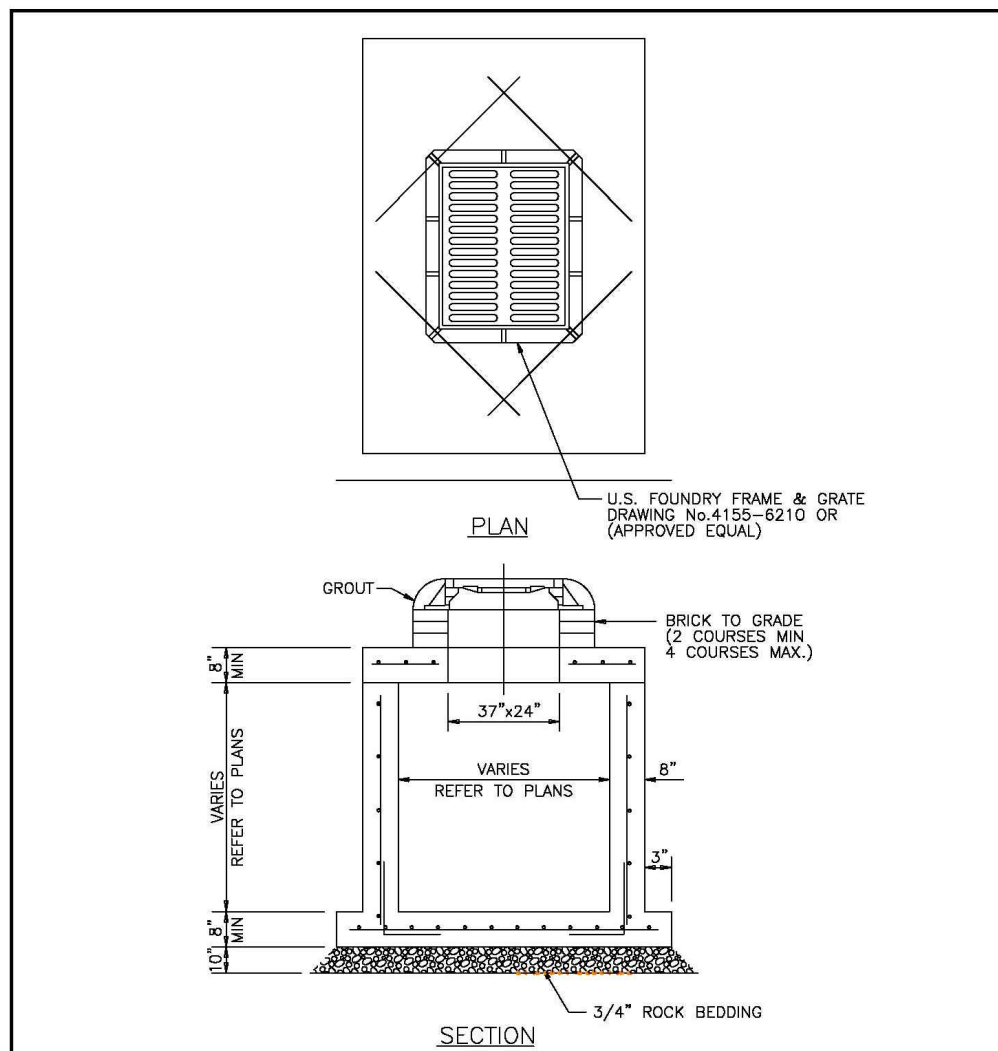
1. RECTANGULAR STRUCTURE
2. ROUND STRUCTURE

POLLUTANT RETARDANT BAFFLE DETAIL



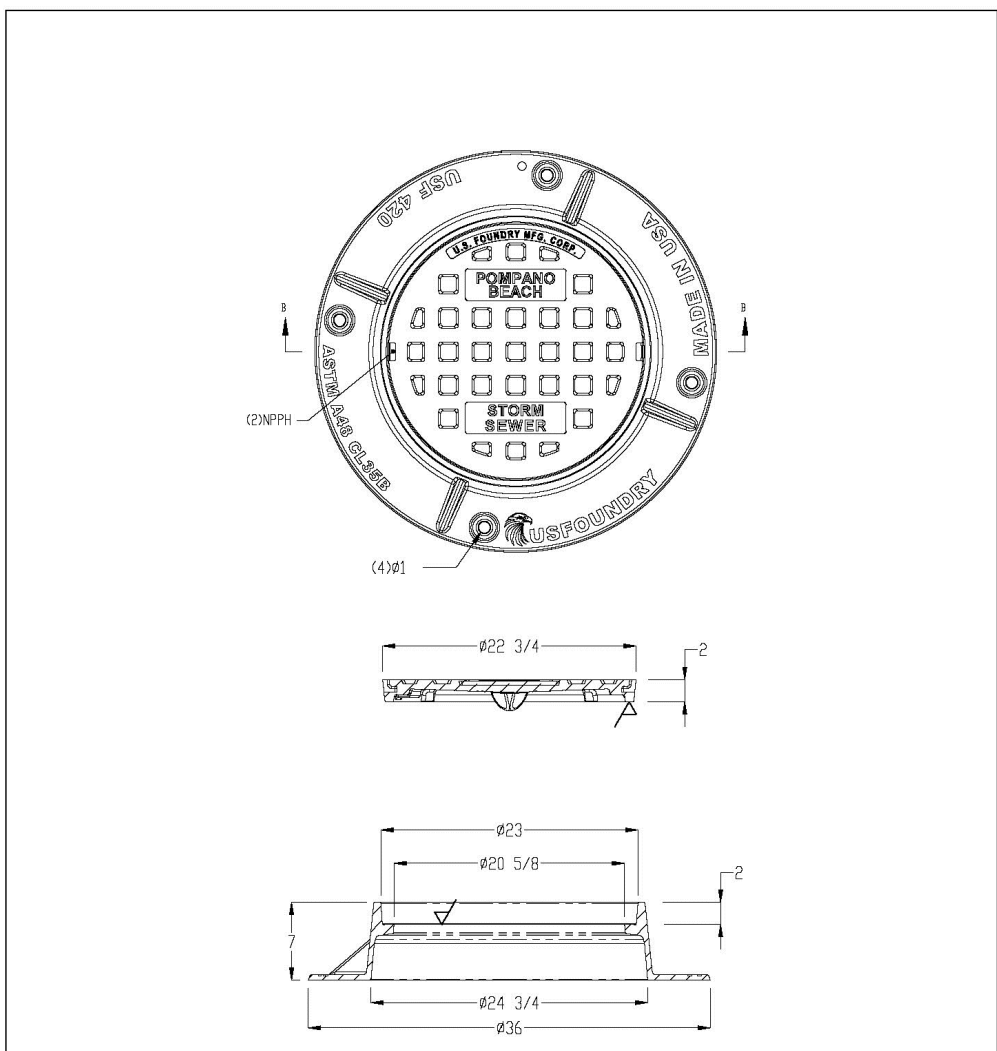
CAST IRON GRATES

ENGINEERING STANDARDS 2025			
REVISIONS	BY	DATE	ENGINEERING DIVISION
			CITY OF POMPAÑO BEACH
			SCALE: N.T.S.
			CITY OF POMPAÑO BEACH
			DATE: JUNE 2022
			DWG. NO. 410-1



PRECAST DRAINAGE STRUCTURE

ENGINEERING STANDARDS 2025			
REVISIONS	BY	DATE	ENGINEERING DIVISION
			CITY OF POMPAÑO BEACH
			SCALE: N.T.S.
			CITY OF POMPAÑO BEACH
			DATE: APRIL 2024
			DWG. NO. 400-1A



COVER FOR MAN-HOLES AND INLETS

ENGINEERING STANDARDS 2025			
REVISIONS	BY	DATE	ENGINEERING DIVISION
			CITY OF POMPAÑO BEACH
			SCALE: N.T.S.
			CITY OF POMPAÑO BEACH
			DATE: DEC 2022
			DWG. NO. 409-1

DateDescriptionNo.

REVISIONS

THIS ITEM HAS BEEN DIGITALLY SIGNED AND SEALED BY MICHAEL CARR, P.E. ON THE DATE ADJACENT TO THE SEAL

Printed Copies of this document are not considered signed and sealed and the signature must be verified on any electronic copies.

MICHAEL P. CARR

No. 72424

STATE OF FLORIDA

PROFESSIONAL ENGINEER

SIGNATURE

DATE SIGNED

MICHAEL CARR

PROFESSIONAL ENGINEER FL Lic. No. 72424

LANGAN

Langan Engineering and Environmental Services, LLC

110 East Broward Boulevard, Suite 1500
Fort Lauderdale, FL 33301

T: 954.320.2100 F: 954.320.2101 www.langan.com

FL CERTIFICATE OF AUTHORIZATION NO. 00006601/LB8172/LB8198

Project

POMPAÑO BEACH

BROWARD COUNTYFLORIDA

Drawing Title

DRAINAGE DETAILS

Project No. 330134201

Date 03/01/2025

Drawn By EWM

Checked By PZ24-12000024

Drawing No. C-7.0

08/27/2025

P&Z

PZ24-12000024

09/24/2025

Date: 6/23/2025 Time: 13:50 User: gyllianueva Style Table: Langan gbl-Langan-C-4 Document Code: 330134201-0501-CS501-0102